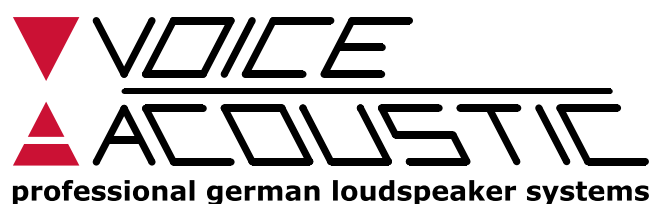


VA-Remote Control

Control Software

Operating Manual



Introduction

Installation	4
Starting control software	4

System settings via software

1.1 Menu bar (login window)	5
1.2 Menu tab „File“	5
Quit	5
1.3 Menu tab „Tools“	5
Set/Change Software Password	5
New Group	6
Enter Demo Mode / Leave Demo Mode	7
Enable Update / Disable Update	7
Enter Demo Mode / Leave Demo Mode	7
1.4 Menu tab „Help“	7
About	7
2.1 Menu bar (program window)	7
2.2 Menu tab „File“	8
Open	8
Save	8
Create Factory File	8
Create Flash Image	8
Restore Presets	9
Backup Presets	9
Quit	9
2.3 Menu tab „Hardware“	9
Enter Password	9
Passwords	9
Access Rights	10
Configure > Network Settings	10
Configure > Power On Preset	11
Configure > Read-Only Preset Range	11
Configure > Auto Power Down	11
Configure > Enable Tone Control	12
Configure > Output Mode	12
Configure > Routing	12
Configure > Display	12

Locking Unit	13
Go to Standby	13
Firmware Update	13
Status Details	13
2.4 Menu tab „Presets“	14
Passwords	14
Access Rights	14
Clear All User Presets	14
Clear All Read Only Presets	9
2.5 Menu tab „Help“	15
About	15

Channel configuration via software

3.1 Start menu	16
3.2 Input menu	18
Display	18
Gain	19
Mute	19
Delay	19
Limiter	19
Compressor	20
PEQ (Parameter filter)	21
High-pass and deep-pass filter	21
3.3 Output menu	22
Display	22
Gain	23
Mixer	23
Mute	23
Invert	23
Delay	24
Limiter	24
Compressor	24
PEQ (Parameter filter)	25
High and deep-pass filter	25

Annex

Imprint	26
---------------	----

Installation

Compatible with the following operating systems:

- Windows XP and higher (32 & 64 bit)
- MAC OS-X

After installing, connect the PC and the device.

The control software is available on the supplied data carrier. Before installation, ensure you are using the latest software and driver version.

The latest version is available under www.voice-acoustic.de.

Double-click the installation package and start the installation. The assistant will guide you through the installation procedure. Older versions are removed automatically.

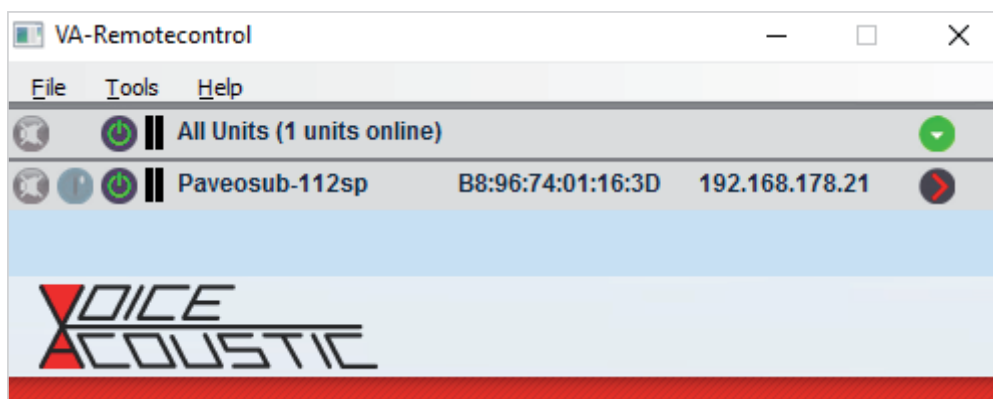
Binary firmware files must be installed under Windows.

Start control software

Firstly, connect the controller and the PC and start the software in the start menu, or double-click the program symbol.



The login window is displayed. If a controller is connected, it is displayed in the overview.

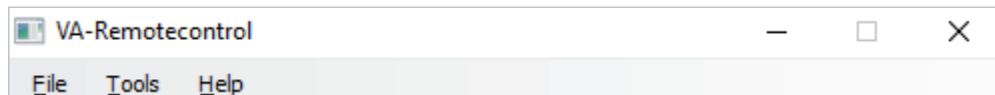


1.1 Menu bar (login window)

You can use the menu bar by clicking the menu tabs. This opens the selected submenu where the menu commands are displayed.

Confirm your entries in the menu commands with **OK** or cancel them with **Cancel**.

When selecting Cancel the selection is reset to the previous condition.



1.2 Menu tab „File“

Quit

End VA Remote Control Center.

- Click **F**ile > **Q**uit to end the control software.

1.3 Menu tab „Tools“

Set/Change Software Password

Use a password to protect your software against unauthorized use.

Create password:

- Click **T**ools > **S**et Software Password and enter a password* of your choice.
- Confirm the password by entering it again.

* The password must contain at least 8 characters.

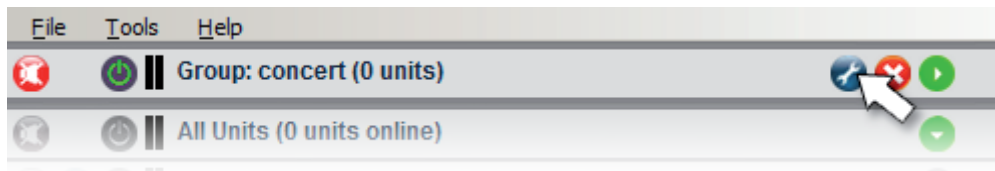
Change password:

- Click **T**ools > **C**hange Software Password.
- Enter your old password.
- Enter your new password and confirm it by entering it again.

New Group

Collect several controllers in one group.

- Click **Tools** > **New Group**, enter a name and confirm with **Ok**.
- You can edit the group by clicking the wrench.



Configure Group

The **Status** indicates whether the group is enabled or disabled.

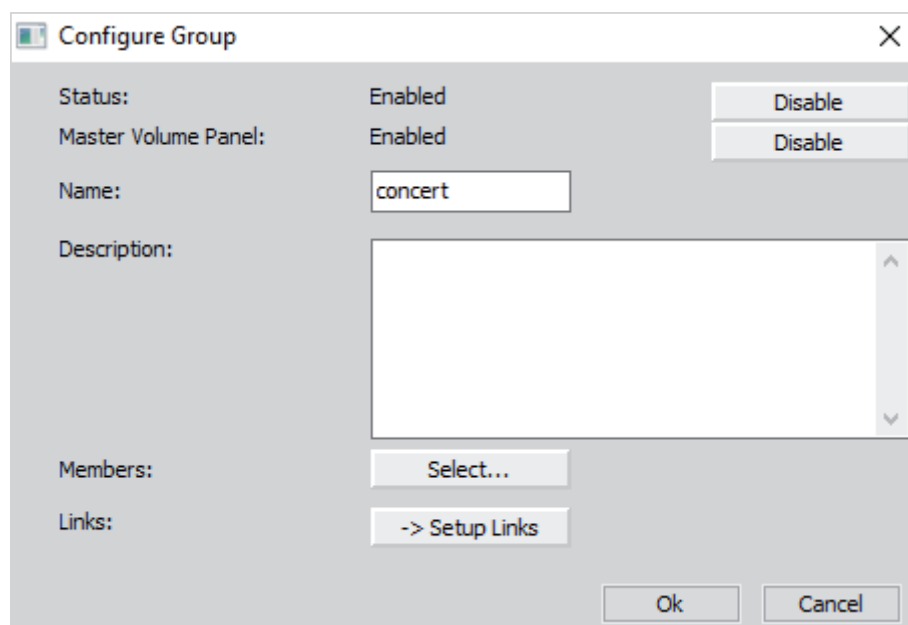
The **Master Volume Panel** regulates the volume level for all groups simultaneously.

- Click **Enable** for activation and **Disable** for inactivation.

Under **Name** you can rename the group and provide a **Description** for the group for yourself or for other users.

Under **Members** you can add devices to the group or remove them.

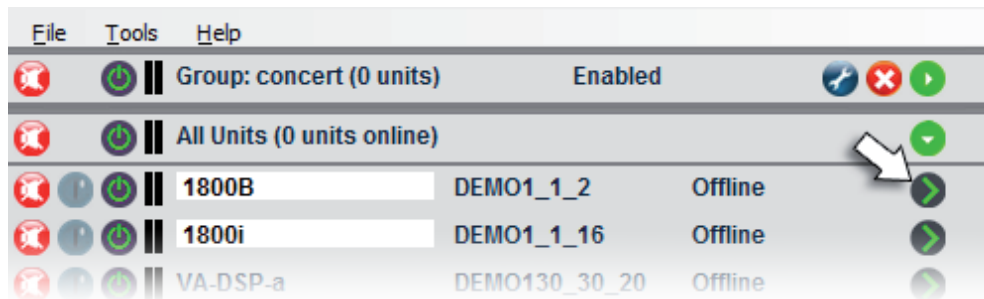
- Click **Select...** to add devices to the group or to remove them.
- Under **Setup Left** select the parameters that must be linked.



Enter Demo Mode / Leave Demo Mode

Start demo mode with several controllers.

- Click **Tools > Enter Demo Mode**.
- To start the Demo Model, click on the green arrow in the "Start Window".



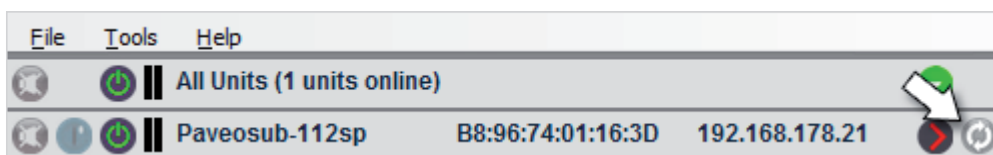
For the Demo Model you need to enter a password!

- In the „Program window“ click **Hardware > Enter Password**.
- Enter the password **Admin**.
- For logout, in the „Program window“ click **File > Quit**.
- To leave the Demo Mode, in the „Start window“, select **Tools > Leave Demo Mode**.

Enable Update / Disable Update (Development Mode)

Use a password to protect your software against unauthorized use.

- Click **Tools > Enable Update**.



1.4 Menu tab „Help“

About

View information on this software.

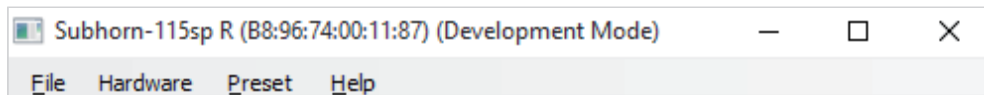
- Click **Help > About**, to view the information.

2.1 Menu bar (program window)

You can use the menu bar by clicking the menu tabs. It opens the menu selection and the menu commands are displayed.

Confirm your entries in the menu commands with **OK** or cancel them with **Cancel**.

The setting is reset to the previous condition.



2.2 Menu tab „File“

Open

Open external presets.

- Click **File > Open**, to upload a preset from a data carrier.

Save

Save the presets you created.

- Click **File > Save**, to save a preset in a data carrier.

Create Factory File

Function to load all settings on the DSP. Creates a file with all software settings and presets.

- To create a Factory File, click **File > Create Factory File**.

Create Flash Image

Function to load all settings on the DSP. Creates a binary image of the flash memory with all software settings and presets.

For this purpose, the firmware version you use on the device must be compatible with the software firmware version, because the firmware is also contained in the flash file!

Before uploading the Flash Image File, first make a backup of all previous settings, because the Flash Image File may delete them!

- To create a binary image of the Flash Memory, click **File > Create Flash Image**.

Restore Presets

Restore saved presets.

- Click **File > Restore Presets**, and select the backup map for restore.

Backup Presets

Save externally the presets you created.

- Click **File > Backup Presets**, and select the backup map for save.

Quit

Log out from the controller.

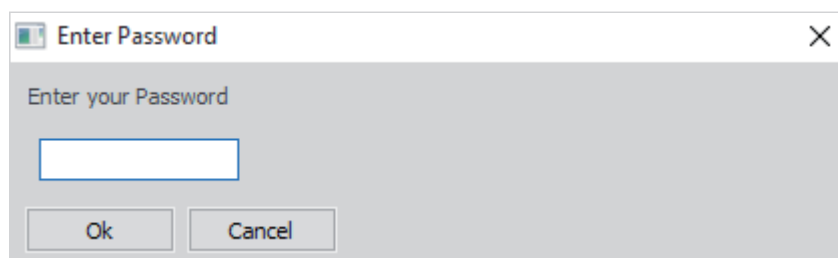
- Click **File > Quit**, to log out from the controller.

2.3 Menu tab „Hardware“

Enter Password

Activate controller

- Click **Hardware > Enter Password**, and enter the corresponding password.



Passwords

Determine the passwords for User, Admin or Developer.

- Click **Hardware > Passwords**.
- Select from User, Admin or Developer and create a password.

Access Rights

Access rights for Locked (not logged in), User or Admin (Administrators).

- Click **Hardware > Access Rights**, and select from **Locked**, **User** or **Admin**.

Locked	User	Admin	Possible access rights
x	x	x	Load Presets
x	x	x	Save Presets
	x	x	Enable Display Lock Control
		x	Change User Access Rights
	x	x	Change Locked Access Rights
x	x	x	Change Unit Name
	x	x	Lock Automatically After Power Cycle
x	x	x	Change Unit Configuration
x	x	x	Load an Empty Preset
x	x	x	Upgrade the unit firmware
x	x	x	Show Full Graphics
x	x	x	Master Volume Control
x	x	x	Tone Control

Configure > Network Settings

Note: For this setting, there must be a connection via a router. If the controller is connected via USB, the **Network Settings** menu item is not displayed!

If required, here you can enter a fixed IP address and Subnet Mask. Furthermore, you can activate the Telnet Interface, which you need for the remote control.

- Click **Hardware > Configure > Network Settings**, enter the settings.

Network Configuration

You can get IP settings assigned automatically by DHCP if your network supports this capability, or (if no DHCP server is found) the network will be configured automatically by your DSP units. Alternatively, you can set a fixed IP and subnet mask.

☒ Configure Network Automatically

☐ Configure Network Manually:

IP Address:

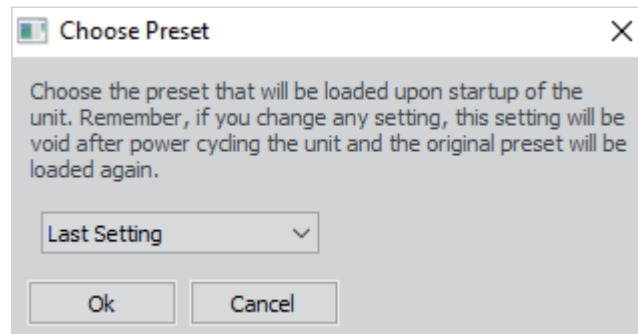
Subnet Mask:

Telnet Interface: Disabled

Configure > Power On Preset

Here you can determine the loading of the preset for switching on the controller.

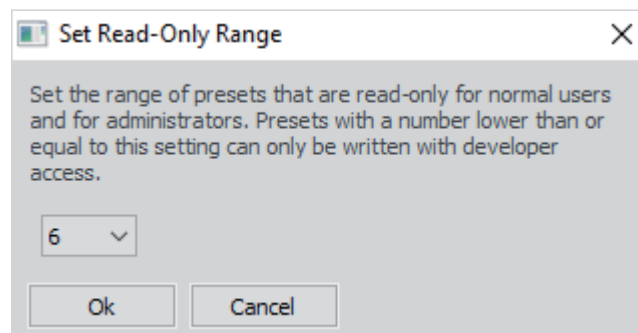
- Click **Hardware > Configure > Power On Preset**, to select a preset.



Configure > Read-Only Preset Range (Development Mode)

Here you can determine a range of 1 - ..., where the presets are write-protected against the changes by users and administrators. They can only be adapted by a developer.

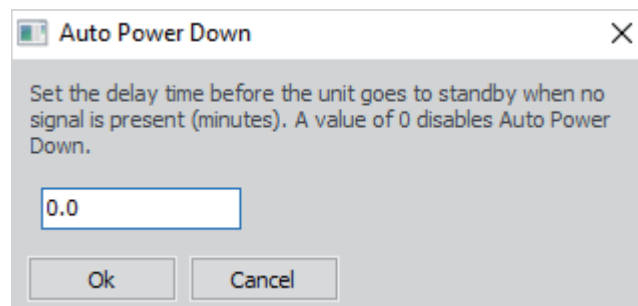
- Click **Hardware > Configure > Read-Only Preset Range**, to select a number.



Configure > Auto Power Down

Switches the amplifier off, when no signals are processed within the indicated time range.

- Click **Hardware > Configure > Auto Power Down** and indicate the time in minutes.



Configure > Enable Tone Control (Development Mode)

Determine the frequency range for the activation of the signal control.

You can enable the deep (**Bass**), medium (**Mid**) and high (**Treble**) sound frequency range.

- Click **Hardware > Configure > Enable Tone Control**.
- Select which of the three ranges **Bass**, **Mid** and **Treble** must be enabled.

Configure > Output Mode

Here you determine the switching of the output channels 2 and 3.

Stereo means that the amplifier conducts the current to two independent channels.

Bridge Mono connects two channels to a channel which is much amplified.

- Click **Hardware > Configure > Output Mode** and select one of both functions.
- Select from **Stereo** or **Bridge Mono**.

Configure > Routing

With the **Routing** function in the system menu you configure the signal source, if you wish to determine your own presets to operate other speakers/configurations.

For the implementation of a Voice-Acoustic Set and the display of a speaker preset, the router has already been determined and can not be altered, in order to avoid the occurrence of faults.

- Click **Hardware > Configure > Routing**.
- Select from **3-way Mono** or **Stereo + Sub**.

Configure > Display

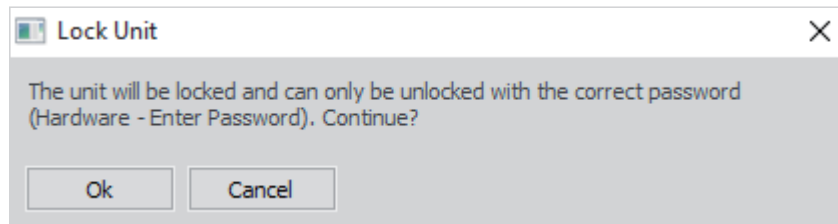
Switch on/off or dim the display on the controller.

- Click **Hardware > Configure > Display**.
- Select from **On**, **Delayed Off** or **Dimmed**.

Lock Unit

Protect the controller against unauthorized use.

- Click **Hardware > Lock Unit** to lock the controller.



- Click **Hardware > Enter Password** to release the controller.

Go to Standby

Set the controller in Standby.

- For setting the Controller in Standby, click **Hardware > Go to Standby**.
- To end Standby, click **Hardware > Exit Standby**.
- Click **Hardware > Enter Password**, and re-enter your password.

Firmware Update

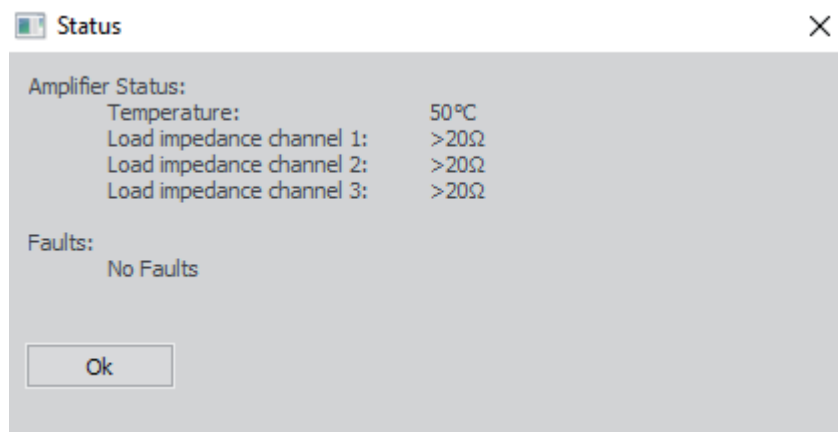
- To perform a new Firmware Update, select **Hardware > Firmware Update**.

An update is performed depending on your Lockin status and you access rights.

Status Details

Show gain details and eventual faults.

- Click **Hardware > Status Details** to display the information.



2.4 Menu tab „Presets“ (Development Mode)

Passwords

Release the access rights for the Input and Output Channels.

- Click **Presets > Passwords** and select from **Admin** and **Developer**.
- Enter the corresponding password.

Access Rights

Access rights **Locked** (not logged in), **User** or **Admin** (Administrators).

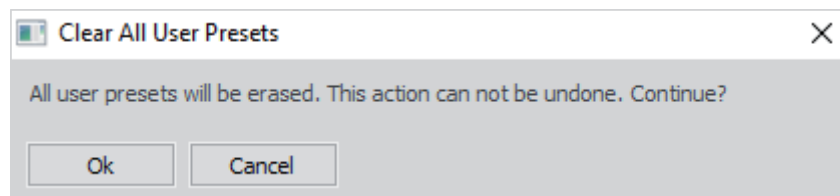
- Click **Presets > Access Rights** and select from **Locked**, **User** oder **Admin**.

Locked	User	Admin	Possible access rights
x	x	x	Access Input Channel
x	x	x	Access Output Channel

Clear All User Presets

Clear all user presets which are not saved before edition.

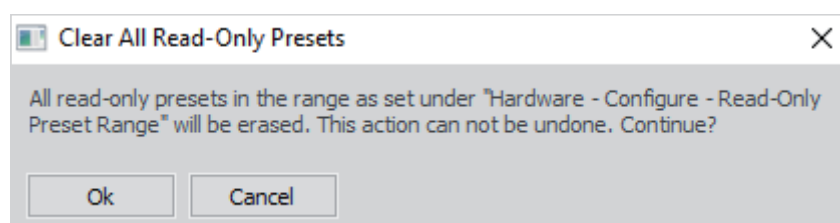
- Click **Presets > Clear All User Presets** to clear all user presets



Clear All Read Only Presets

Clear all presets that you have locked for edition.

- Click **Presets > Clear All Read Only Presets** to clear all saved presets



2.5 Menu tab „Help“

About

Show information on the connected unit and software.

- Click **Help > A**bo**ut**, to view the information.



3.1 The main menu

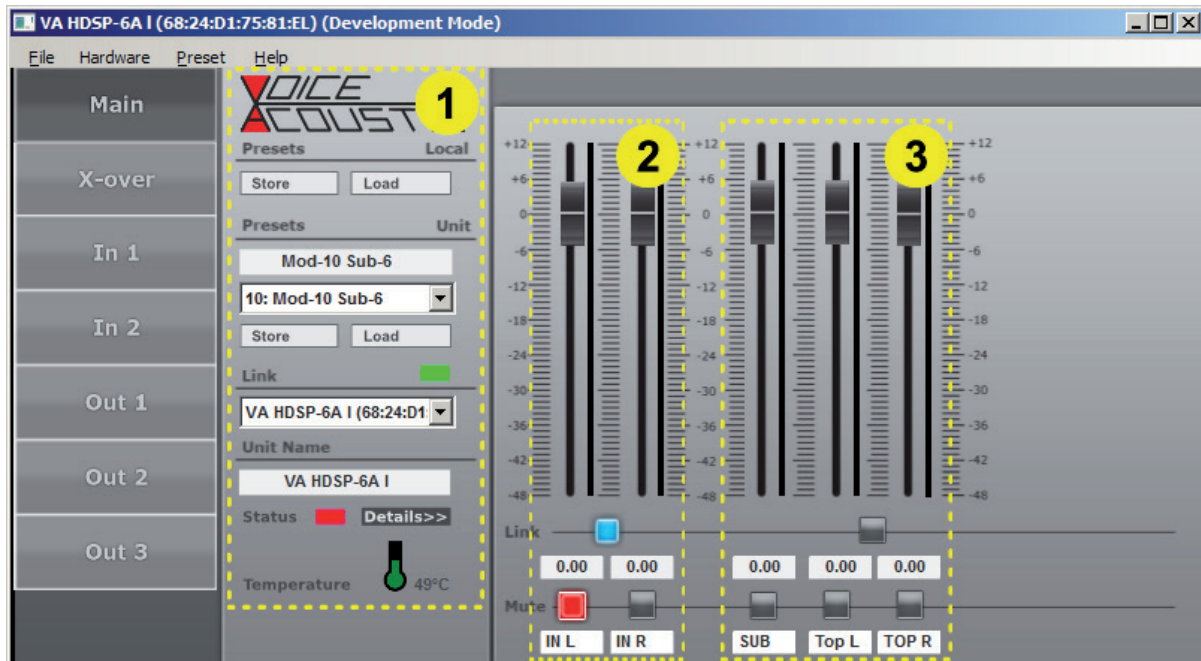


Abb. 2-1: The main menu

1. System area

This area displays the following tabs from top to bottom:

Presets Local

With the **Store-buttons** the current settings, which are available in the software memory, are stored to a hard disk or to another data carrier.

With the **Load buttons** the settings which are available on the hard disk or another data carrier, are loaded to the software memory.

Presets Unit

With the **Store buttons** the current settings, which are available in the software memory, are directly stored to the VA-Controller.

With the **Load buttons** the settings which are available in the memory of the VA-Controller, are loaded to the software memory.

Link

If you use software to control more than one device, you can search the device for edition in the **Link list**.

Unit Name

A display is shown of the name of the device you want to edit.

2. Input area

Here you make the most important settings for the input channels. You can change all parameters by entering the values in the fields, and click the buttons or use the mouse for slide control.

This area displays the following tabs from top to bottom:

Gain (Input level and output level)

Gain can be adapted by entering a value in the input field below the **Link button**, or when you use the mouse for slide control.

- Select a range from **-47.75 dB** to **12.00 dB**.
- If you wish, you can switch off the channel by turning the **Encoder wheel** to Mute.

Link

You link the channels by clicking the **Link button**. The button light is blue when the channels are linked.

Instruction: If two channels are linked, you can only edit the parameters of the left slider or the value entry fields. Only Out 2 and Out 3 can be connected at the outputs!

Mute

A channel is switched to mute, when you press the **Mute button**. The button light is red, when the channel is mute.

Instruction: If you press the **Mute button** again, the channel with the entered values will be available again!

Designation

In the entry field below, you can assign a designation to each channel.

Instruction: You can designate a maximum of 10 characters!

3. Output area

Here you make the most important settings for the output channels. You can also change all parameters by entering the values in the respective fields, just as for the inputs, and click the buttons or use the mouse for slide control.

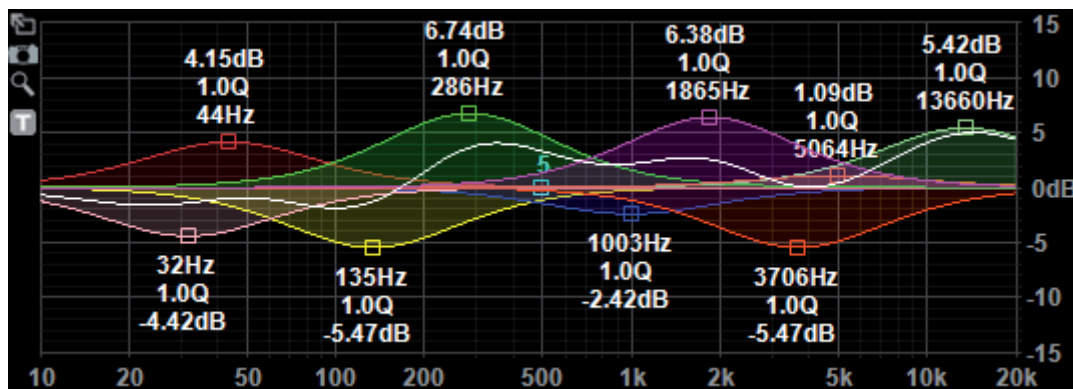
For extensive edition, it is recommended to use the specific channel menu!

3.2 Input menu



Display

Here the frequency curve of the selected input channel is displayed. The frequency and gain of an equalizer can also be edited by sliding the EQ-tabs from 1 to 10.



Gain

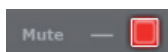


The amplifier slider displays the gain setting for a channel. Under the slider the exact gain value is displayed.

Here the gain is adapted by entering a value in the input field, or when you use the mouse for slide control.

- Select a range from **-47.75 dB** to **12.00 dB**.
- If you wish, you can switch off the sound for a channel, by sliding the control to **Mute**.

Mute



If you wish to switch off the sound for a channel, click the button which lights up red. The channel gain remains unchanged.

- Click the button again and the channel is mute.
- Click the button again and the mute function is off for the channel.

Delay



Here the delay is adapted by entering a value in the input field, or when you use the mouse for slide control.

- Select the desired unit in the dropdown menu.

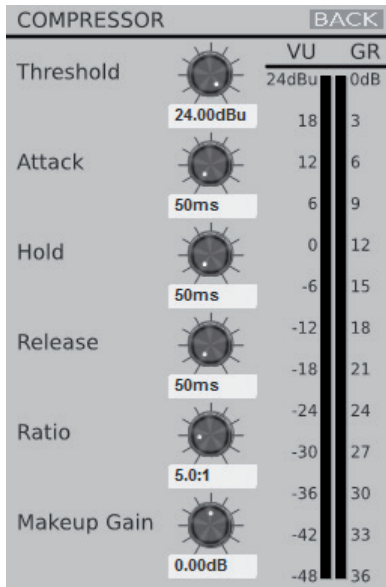
Limiter



Here the limiter settings for the threshold value and release time are modified, by entering a value in the respective input field, or when you use the mouse for slide control.

- Select a range for **THR** from **-48.00 dB** to **12.00 dBu**.
- Select a range for **REL** from **1** to **100 dB/s**.

COMPR



The settings for the input compressor are changed, by clicking the button **COMPR** to the right next to the designation Limiter (see the figure Limiter).

A new window opens and the following setting can be made for the input compressor:

Threshold, Attack, Hold, Release time, Ratio (Compression rate) and **Makeup Gain**.

Here a value is adapted by entering a value in the respective input field, or when you use the mouse for slide control.

You return to the output menu by clicking the button **BACK**.

Select a range for **Threshold** from **-48.00** to **24.00 dB/u**.

- Select a range for **Attack** from **1** to **10,000 ms**.
- Select a range for **Hold** from **1** to **10,000 ms**.
- Select a range for **Release** from **1** to **10,000 ms**.
- Select a range for **Ratio** from **1.20:1** and **25.00:1** or with **Inf:1** (stepless).
- Select a range for **Makeup Gain** from **-12.00 dB** to **12.00 dB**.

PEQ (Parameter filter)

On	Type	Freq	Q	Gain	On	Type	Freq	Q	Gain
<input checked="" type="checkbox"/>	Bell	20Hz	1.0	0.00	<input type="checkbox"/>	Bell	640Hz	1.0	0.00
<input type="checkbox"/>	Bell	40Hz	1.0	0.00	<input type="checkbox"/>	Bell	1.28kHz	1.0	0.00
<input type="checkbox"/>	Bell	80Hz	1.0	0.00	<input type="checkbox"/>	Bell	2.56kHz	1.0	0.00
<input type="checkbox"/>	Bell	160Hz	1.0	0.00	<input type="checkbox"/>	Bell	5.12kHz	1.0	0.00
<input type="checkbox"/>	Bell	320Hz	1.0	0.00	<input type="checkbox"/>	Bell	10.2 kHz	1.0	0.00

The input channels are provided with 10 parameter equalizers, with filter configurations for Bell, Notch, Allpass, Low Shelf, High Shelf, Band Pass, High Pass, Low Pass.

Frequency, edge steepness (Q), Gain can be configured by entering the value in the respective input field. Frequency and Gain can also be edited by sliding with the mouse over the EQ tabs on the display.

- Select the filter type **Type** in the dropdown menu.
- Select a frequency range **Freq** from **20** to **20,000 Hz**.
- Select the edge steepness **Q** within a range from **0.10** bis **25.00**.
- Select a **Gain** within a range from **-12.00** bis **12.00 dB**.
- Click the left button **On** to enable the filter (button light is blue).
- Click again the button **On** to disable the filter.

High-pass and deep-pass filter

HPF	LPF
<input checked="" type="checkbox"/> Off Linkwitz-Riley 24dB	<input type="checkbox"/> Off Linkwitz-Riley 24dB

The channels are provided with a high-pass and a deep-pass filter with the following configurations:

Butterworth 6dB, 12dB, 18dB, 24dB, Bessel 6dB, 12dB, 18dB, 24dB, Linkwitz-Riley 12dB, 24dB.

The frequency is configured by entering the values in the respective input fields. Enter **Off** in the input field for disabling the corresponding filter.

- Select a frequency range from **20** to **20.000 Hz**.
- Select the filter type in the dropdown menu.
- Click the left button to enable the filter (button light is blue).
- Click again the button to disable the filter.

3.3 Output menu

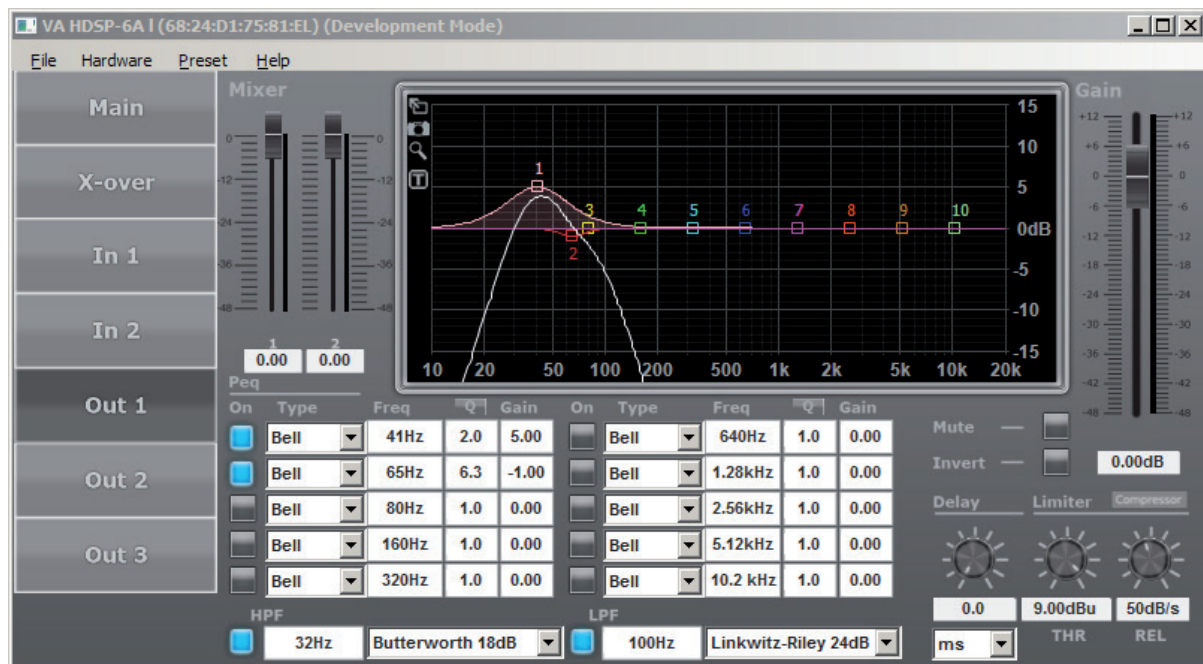
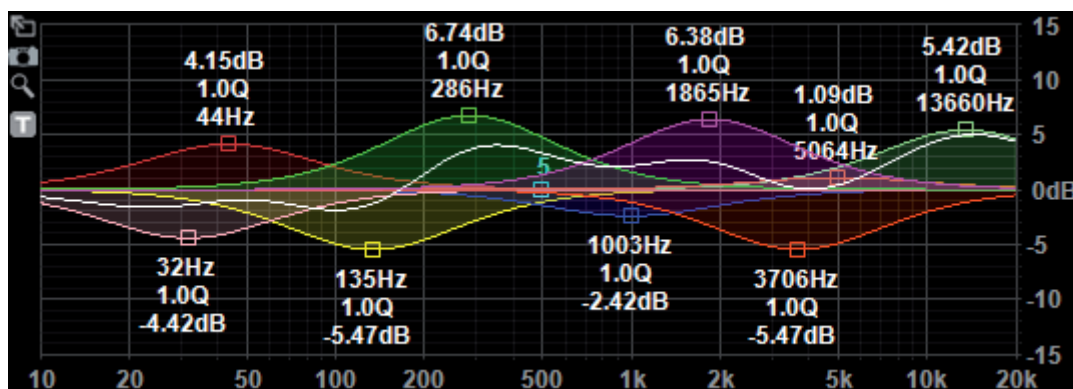


Abb. 2-2: Output Menu for the output channels

Display

Here the frequency curve of the selected output channel is displayed. The frequency and gain of an equalizer can also be edited by sliding the EQ-tabs from 1 to 10.



Gain

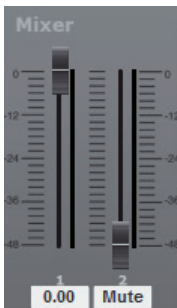


The amplifier slider displays the gain setting for a channel. Under the slider the exact gain value is displayed.

Here the gain is adapted by entering a value in the input field, or when you use the mouse for slide control.

- Select a a range from **-47.75 dB** to **12.00 dB**.
- If you wish, you can switch off the sound of the channel by sliding the control to **Mute**.

Mixer (input mixer)



The mixer is used for the mixing of the signals of both input channels.

Here the gain is adapted by entering a value in the input field, or when you use the mouse for slide control.

- Select a a range from **-48.00 dB** to **0.00 dB**.
- If you wish, you can switch off the sound of the channel by sliding the control to **Mute**.

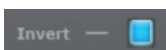
Mute



If you wish to switch off a channel, click the button which lights up red. The channel gain remains unchanged.

- Click the button again and the channel is mute.
- Click the button again and the mute function is off for the channel.

Invert



If you wish to invert the phase of the channel, click the button. This light is blue when the phase is inverted.

- Click the button for inverting the phase.
- Click the button to invert the phase again.

Delay



Here the delay is adapted by entering a value in the input field, or when you use the mouse for slide control.

- Select the desired unit in the dropdown menu.

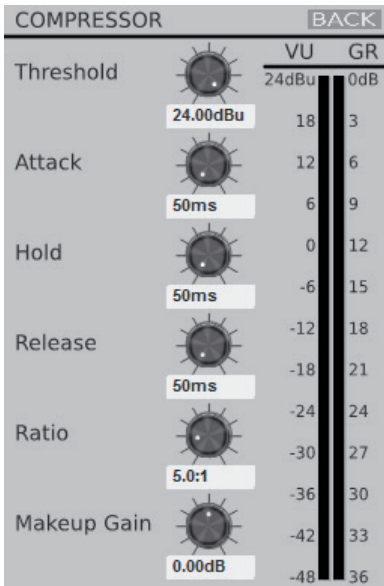
Limiter



Here the limiter settings for the threshold value and release time are modified, by entering a value in the input field, or when you use the mouse for slide control.

- Select a range for **THR** from **-48.00 dB** to **12.00 dBu**.
- Select a range for **REL** from **1** to **100 dB/s**.

COMPR



The settings for the input compressor are changed, by clicking the button **COMPR** to the right next to the designation Limiter (see the figure Limiter).

A new window opens and the following setting can be made for the input compressor:

Threshold, Attack, Hold, Release time, **Ratio** (Compression rate) and **Makeup Gain**.

Here a value is adapted by entering a value in the respective input field, or when you use the mouse for slide control.

You return to the output menu by clicking the button **BACK**.

Select a range for **Threshold** from **-48.00** to **24.00 dB/u**.

- Select a range for **Attack** from **1** to **10,000 ms**.
- Select a range for **Hold** from **1** to **10,000 ms**.
- Select a range for **Release** from **1** to **10,000 ms**.
- Select a range for **Ratio** from **1.20:1** and **25.00:1** or with **Inf:1** (stepless).
- Select a range for **Makeup Gain** from **-12.00 dB** to **12.00 dB**.

PEQ (Parameter filter)

On	Type	Freq	Q	Gain	On	Type	Freq	Q	Gain
<input checked="" type="checkbox"/>	Bell	20Hz	1.0	0.00	<input type="checkbox"/>	Bell	640Hz	1.0	0.00
<input type="checkbox"/>	Bell	40Hz	1.0	0.00	<input type="checkbox"/>	Bell	1.28kHz	1.0	0.00
<input type="checkbox"/>	Bell	80Hz	1.0	0.00	<input type="checkbox"/>	Bell	2.56kHz	1.0	0.00
<input type="checkbox"/>	Bell	160Hz	1.0	0.00	<input type="checkbox"/>	Bell	5.12kHz	1.0	0.00
<input type="checkbox"/>	Bell	320Hz	1.0	0.00	<input type="checkbox"/>	Bell	10.2 kHz	1.0	0.00

The input channels are provided with 10 parameter equalizers, with filter configurations for Bell, Notch, Allpass, Low Shelf, High Shelf, Band Pass, High Pass, Low Pass.

Frequency, edge steepness (Q), Gain can be configured by entering the value in the respective input field. Frequency and Gain can also be edited by sliding with the mouse over the EQ tabs on the display.

- Select the filter type **Type** in the dropdown menu.
- Select a frequency range **Freq** from **20** to **20,000 Hz**.
- Select edge steepness **Q** within a range from **0.10** to **25.00**.
- Select **Gain** within a range from **-12.00** bis **12.00 dB**.
- Click the left button **On** to enable the filter (button light is blue).
- Click again the button **On** to disable the filter.

High-pass and deep-pass filter

HPF	LPF
<input checked="" type="checkbox"/> Off Linkwitz-Riley 24dB	<input type="checkbox"/> Off Linkwitz-Riley 24dB

The channels are provided with a high-pass and a deep-pass filter with the following configurations:

Butterworth 6dB, 12dB, 18dB, 24dB, Bessel 6dB, 12dB, 18dB, 24dB, Linkwitz-Riley 12dB, 24dB.

The frequency is configured by entering the values in the respective input fields. Enter **Off** in the input field for disabling the corresponding filter.

- Select a frequency range from **20** to **20.000 Hz**.
- Select the filter type in the dropdown menu.
- Click the left button to enable the filter (button light is blue).
- Click again the button to disable the filter.

Imprint

© SRV Licht- & Tonanlagen, all rights reserved.

All specifications in this manual are based on information available at the time of publishing for the features and safety guidelines of the described products. Technical specifications, measurements, weights and properties are not guaranteed.

The manufacturer reserves the right to make technical modifications according to legal regulations stipulating the continual improvement of product features. For the safe operation of the unit, this manual and all other required information must be available to all users at the time of assembly and disassembly of the unit, and during operation. Assemble or operate the unit only after reading and understanding this manual, and keeping it at hand at all times at the site.

We are happy to receive your suggestions and proposals for the enhancement of this manual.

Please send us your ideas to the following address:

SRV Licht- & Tonanlagen - Voice-Acoustic Headquarters
Gewerbegebiet Brocksfeld 3
D-27313 Dörverden

Tel.: + 49 (0) 4234 942 777

Fax: + 49 (0) 4234 942 427

Email: info@voice-acoustic.de